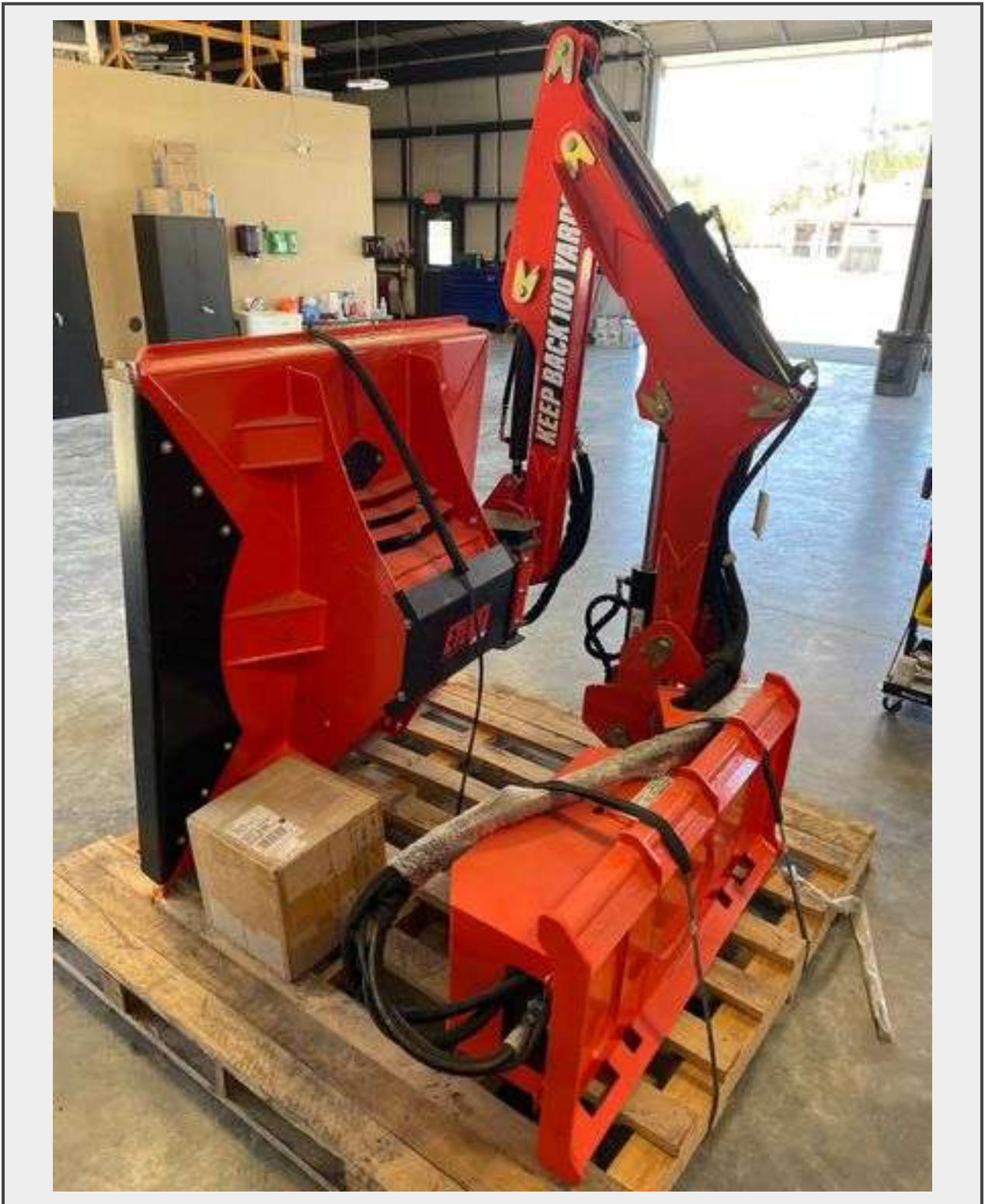


Sale Name: Newton County, Texas

LOT 1 - ETERRA RAPTOR HIGH FLOW SKID STEER MOUNT BOOM MOWER



Description

ETERRA RAPTOR HIGH FLOW SKID STEER MOUNT BOOM MOWER. SER: 00464247L. Reported to be NEW/UNUSED. This item may contain unknown defects. BIDDER IS RESPONSIBLE FOR INSPECTING MERCHANDISE BEFORE BIDDING. THIS INFORMATION IS BELIEVED TO BE TRUE TO THE BEST OF KNOWLEDGE AND IS TO BE USED AS A GUIDE ONLY. ITEM IS BEING SOLD AS IS, WHERE IS WITH ALL FAULTS AND DEFECTS.

NO WARRANTIES OR GUARANTEES IMPLIED OR EXPRESSED. UNLESS TAX EXEMPT FOR RESALE, FARM USE, OR OTHER, ALL APPLICABLE SALES TAXES AND FUEL SURCHARGES WILL APPLY TO THIS ITEM. Any discrepancies with any item must be brought to the seller's attention before item is removed from premises. Photos and description provided by Newton County.

You can view a video of how this type of attachment works at the ETERRA website

<https://www.etterra-usa.com/raptor-skid-steer-boom-arm-mower-attachment/>

AuctioneerExpress.com is in no way affiliated with www.etterra-usa.com. We do not warrant, endorse, guarantee, or assume responsibility for any information offered or advertised. We will not be a party to or in any way responsible for any transactions between you and third-party services.

Quantity: 1



<https://www.auctioneerexpress.com/>